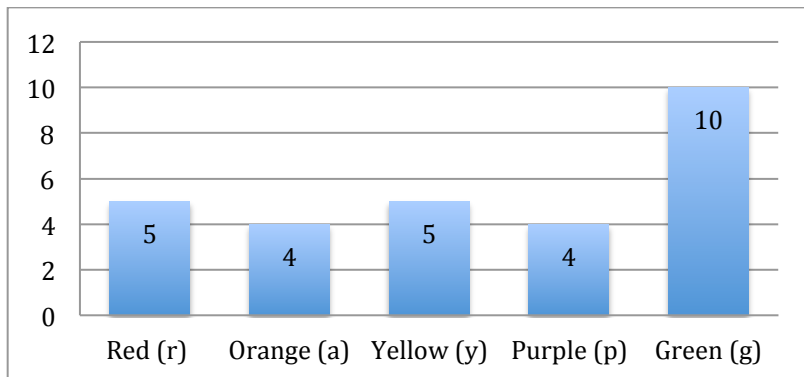


Algebra 1
Section 4.7 Preview

Name: _____

A bag of Skittles was opened and recorded below. Use the data to evaluate the following expressions.



1. $3r - a$	2. $4r - 4y$	3. $\frac{1}{2}g - p$
4. $r + 2g - 3$	5. $\frac{a+p}{r-3}$	6. $p^2 - g$
7. $ 2a - 2y $	8. $- -a + 5 $	9. $-a(g - r)$

Evaluate the function for the given value.

10. $f(x) = 3x + 2, f(4)$	11. $f(x) = -x + 7, f(-6)$
12. $g(x) = \frac{2}{3}x - 5, g(-9)$	13. $g(x) = \frac{x+2}{6}, g(4)$
14. $h(x) = 3x, h(7)$	15. $h(x) = 8 - \frac{x}{6}, h(-12)$

Solve the equation and check your answer.

16. $2(3r - 6) = -42$

17. $\frac{z - 13}{7} = 0$

18. $15v - 60 = -3(20 - 5v)$

19. $|5r - 10| = 15$

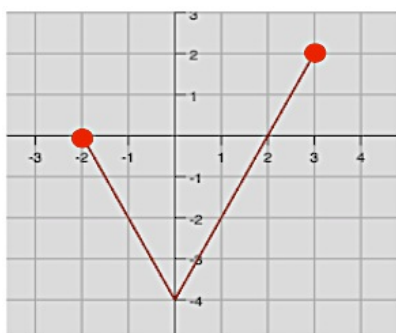
20. The cost to play an online video game is either \$126 if you sign up for a year or \$18 per month.

a. After how many months would the cost be the same?

b. How many months would you have to play the game to make the yearly subscription a better deal?

21. State the domain and range of the continuous function.

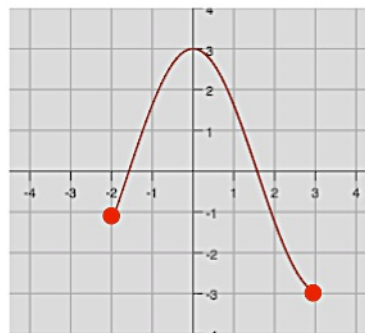
a.



Domain: _____

Range: _____

b.



Domain: _____

Range: _____